



# INDOFINE Chemical Company, Inc.

121 Stryker Lane, Bldg. 30, Suite 1 • Hillsborough, NJ 08844 • U.S.A.

Phone: (908) 359-6778 • FAX: (908) 359-1179

website: [www.indofinechemical.com](http://www.indofinechemical.com)

e-mail: [chemical@indofinechemical.com](mailto:chemical@indofinechemical.com)

## CERTIFICATE OF ANALYSIS

Catalog Number: 06-010

Product Name: **4-AMINOPHENETHYL ALCOHOL**

CAS Number: [104-10-9]

Lot Number: 1704800

Chemical Formula: C<sub>8</sub>H<sub>11</sub>NO

Molecular Weight: 137.18

Appearance: Brown powder

Melting Point: 106-107°C

Loss on drying: 0.67%

Storage: Store in a cool, dry place

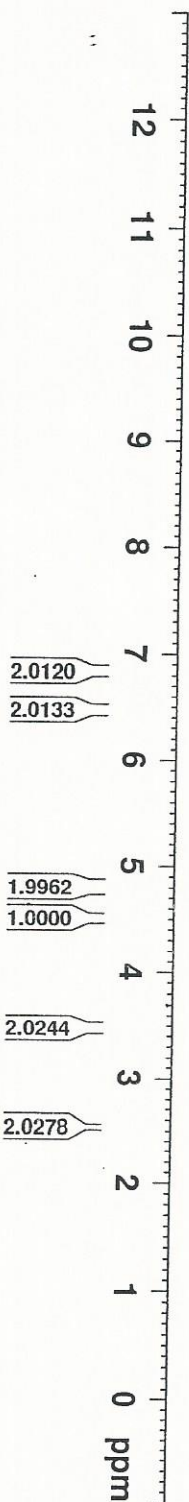
Purity: 98.6%



INDOFINE Chemical Company, Inc.  
 121 STRYKER LANE  
 BLDG. 30, SUITE 1  
 HILLSBOROUGH, NJ 08844

Catalog No.: 06-010  
 Product Name: 4-Aminophenethyl alcohol  
 Lot No.: 1704800

- 6.848
- 6.827
- 6.477
- 6.473
- 6.461
- 6.456
  
- 4.801
- 4.522
- 4.509
- 4.496
- 3.504
- 3.491
- 3.486
- 3.473
- 3.467
- 3.454
- 3.336
- 2.550
- 2.531
- 2.513
- 2.504
- 2.499
- 2.495
- 0.00



Current Data Parameters

```

F2 - Acquisition Parameters
-----
Date_      20170411
Time       19:13
INSTRUM    spect
PROBHD     5 mm BBOB/
PULPROG    zg30
SOLVENT    DMS
NS         2
DS         2
SFO1       400.150034 MHz
AQ         1.9846387 sec
RG         60.800 usec
DM         257.4 K
TE         300.2 K
D1         1.00000000 sec
ID0        1

===== CHANNEL f1 =====
NUC1       1H
P1         12.80 usec
PL1        0.00 dB
SFO1       400.150034 MHz

F2 - Processing parameters
-----
SI         EM
SF         400.150034 MHz
WDW        EM
SSB        0
GB         0
PC         1.00
  
```

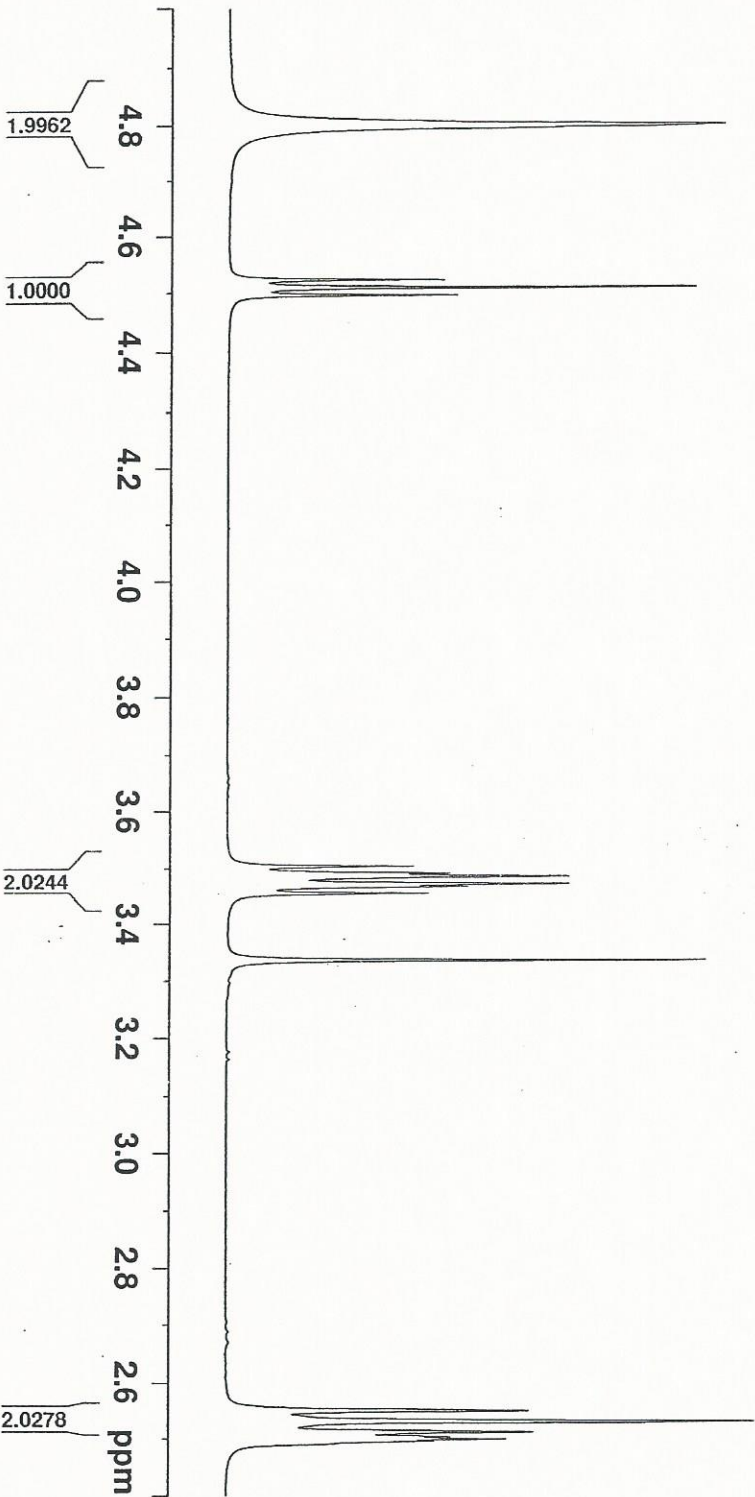




INDOFINE Chemical Company, Inc.  
 121 STRYKER LANE  
 BLDG. 30, SUITE 1  
 HILLSBOROUGH, NJ 08844

Catalog No.: 06-010  
 Product Name: 4-Aminophenethyl alcohol  
 Lot No.: 1704800

- 4.801
- 4.522
- 4.509
- 4.496
- 3.504
- 3.491
- 3.486
- 3.473
- 3.467
- 3.454
- 3.336
- 2.550
- 2.531
- 2.513
- 2.504
- 2.496



Current Data Parameters

```

F2 - Acquisition Parameters
Date_ 20170411
Time 19.11
INSTRUM spect
PROBHD 5 mm PABBO
PULPROG zgpg30
TD 65536
SOLVENT DMSO
DS 1
FIDRES 0.121483 Hz
AQ 3.981386 sec
RG 327.500
DM 60.800 usec
DE 1.00 usec
TE 300.2 K
D1 1.0000000 sec
TD0 1
===== CHANNEL f1 =====
NUC1 1H
P1 12.80 usec
PLA1 13.8489998 dB
SFO1 400.152013 MHz
F2 - Processing parameters
SI 65536
WDW EM
SSB 0
LB 0.30 Hz
GB 0
PC 1.00
  
```

